

WIRELESS MANAGER

GET THE BIG PICTURE ON TRUSTED WIRELESS NETWORKING

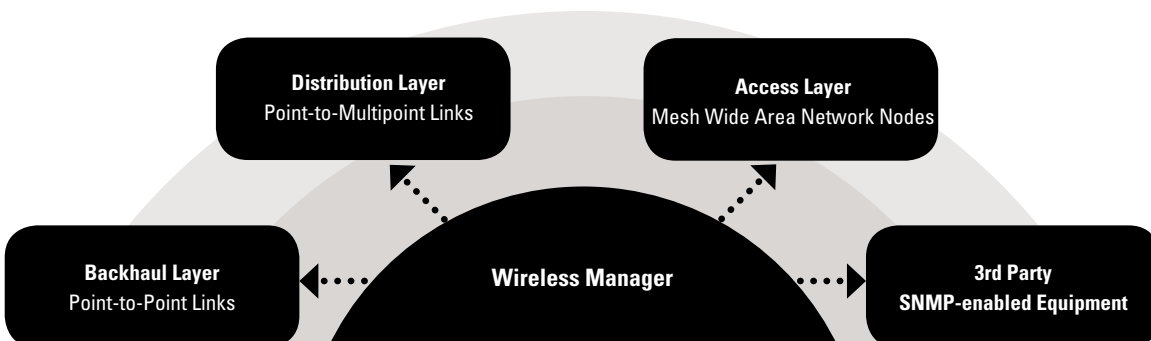
Motorola's Wireless Manager is a powerful, flexible and scalable wireless network deployment and management solution for Motorola's outdoor wireless broadband networks. The solution combines sophisticated Google map-driven network mapping with advanced deployment, configuration and management functionalities to bring total network control to a more visual, more effective level.

Wireless Manager provides integrated management of Motorola's wireless Mesh, Point-to-Point (PTP) and Point-to-Multipoint (PMP) as well as other SNMP enabled devices. It offers a powerful new visually enhanced user interface that helps you control your network's access, distribution and backhaul layers, and provides visibility to WLAN sites and quick launch of Motorola's indoor management systems.

THE ONE POINT WIRELESS SUITE

Wireless Manager is part of Motorola's comprehensive One Point Wireless Suite of software solutions that make the design, deployment, management and security of wireless networks more visual, more complete and more efficient. With these powerful tools, you can design, deploy, manage and secure your indoor and outdoor wireless broadband networks from inception through ongoing operation and expansion.

WIRELESS MANAGER'S INTEGRATED NETWORK MANAGEMENT SOLUTION.

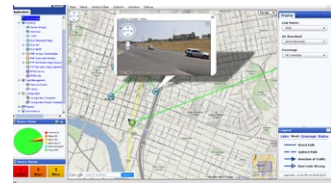
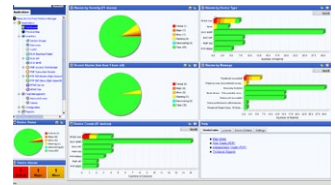


Wireless Manager provides a single consolidated deployment and management application that delivers integrated network control while reducing training time and costs. The solution automatically incorporates complex relationships between network layers, and makes use of Google maps technology for the visualization of network devices and connectivity on both macro and micro levels. You can instantly view total network coverage and link performance data in real time from a single computer console. Key features and benefits include:

FEATURE	DESCRIPTION
Template-Based Configuration	Supports user-defined templates to configure devices thereby accelerating the deployment/change process and resulting in improved efficiencies and reduced errors.
Ultralight Thin Client	Allows users to view the status of the network via an HTML page, which can be easily viewed on a smartphone.
Flexibility in Hardware Support	Pre-configured to manage Motorola's Point-to-Point, Point-to-Multipoint and Mesh Wide Area Network solutions. Also able to manage any SNMP-enabled device.
Unified Network Performance View	Shows all network equipment and links between components with real-time polled performance information, alarms and alerts. Easily filters view by link status, element status, network equipment type and air standard.
Live Google-Map Visualization	Enables visualization of the complete network with a live Google map view that includes device search, local search, street view and device drag and drop.
Network Graphical Dashboards	Provides a consolidated view of the latest key information via network graphical dashboards.
Terrain Height Path Profiler	Enables users to view the terrain height profile along any link path.
Auto Discovery	Accelerates implementation of new equipment by enabling automatic discovery and provisioning via templates.
Activity Scheduling	Automates and schedules tasks during preferred times.
User-defined Groups	Permits administrators to establish device groups based on custom definitions.
Detailed Audit Trails	Captures all SNMP activity for each device.
Historical Analysis	Logs performance and configuration parameters for each device so that plots over time can uncover trends affecting network reliability.
Consistency Checking	Makes it possible to set policies to accept or reject changes.
Customer Support Information Tool	Collects information quickly and easily as needed for Motorola customer support.
North-bound Interface	Supports integration with third party network management systems via SNMP v3.
High-availability Architecture Support	Provides support for dual-server failover mode.
High Scalability	Server scalability up to 10,000 nodes and support for distributed server architecture.
Prizm Migration Support	Includes Prizm migration tools and integrated CNUT functionality.

**WIRELESS MANAGER
HARDWARE AND SOFTWARE
REQUIREMENTS**

- SOFTWARE REQUIREMENTS
- Windows Server 2008 or Red Hat Linux 5.5
- SERVER HARDWARE REQUIREMENTS
- 4 GB RAM
 - Dual-core processor, 2 GHz+
 - Server-grade hardware recommended
 - RAID storage recommended



**ABOUT MOTOROLA WIRELESS
NETWORK SOLUTIONS**

Motorola delivers seamless connectivity that puts real-time information in the hands of users, giving customers the agility they need to grow their business or better protect and serve the public. Working seamlessly together with its world-class devices, Motorola's unrivaled wireless network solutions include indoor WLAN, outdoor wireless mesh, point-to-multipoint, point-to-point networks and voice over WLAN solutions. Combined with powerful software for wireless network design, security, management and troubleshooting, Motorola's solutions deliver trusted networking and anywhere access to organizations across the globe.

